

Y-Chromosome Markers Measured by Different Labs

Prices prior to 5/24/10

Deane Merrill, dwmerrill@charter.net

revised June 2010

Different Y-Chromosome markers are measured for different purposes.

SNP's (single-nucleotide polymorphisms)

SNP's change very slowly from one generation to the next. They are useful for studying migrations of populations over tens of thousands of years.

STR's (short tandem repeats)

STR's change more quickly from one generation to the next. They are useful for studying differences between families, where the most recent common ancestor of a family lived (typically) hundreds of years ago.

Three different laboratories offer comparable tests of Y-chromosome STR's, with 33 to 46 markers.

1. Family Tree DNA (FTDNA) \$149 37-marker test

To qualify for the \$149 price, one must join a surname group when placing an order. To join the FTDNA Merrill/Merrell surname group, contact Dave Merrell, dwmerrill@yahoo.com. Persons testing with FTDNA can request additional tests later at low cost.

Four of the five FTDNA (37) markers (570, 576, CDYa and CDYb) change quickly and can be used to distinguish recent ancestral lines.

See [John F. Chandler](#), "Estimating Per-Locus Mutation Rates", *Journal of Genetic Genealogy* 2:27-33, 2006, [Chandler.pdf](#).

2. DNA Heritage (DNAH) \$149 43-marker test

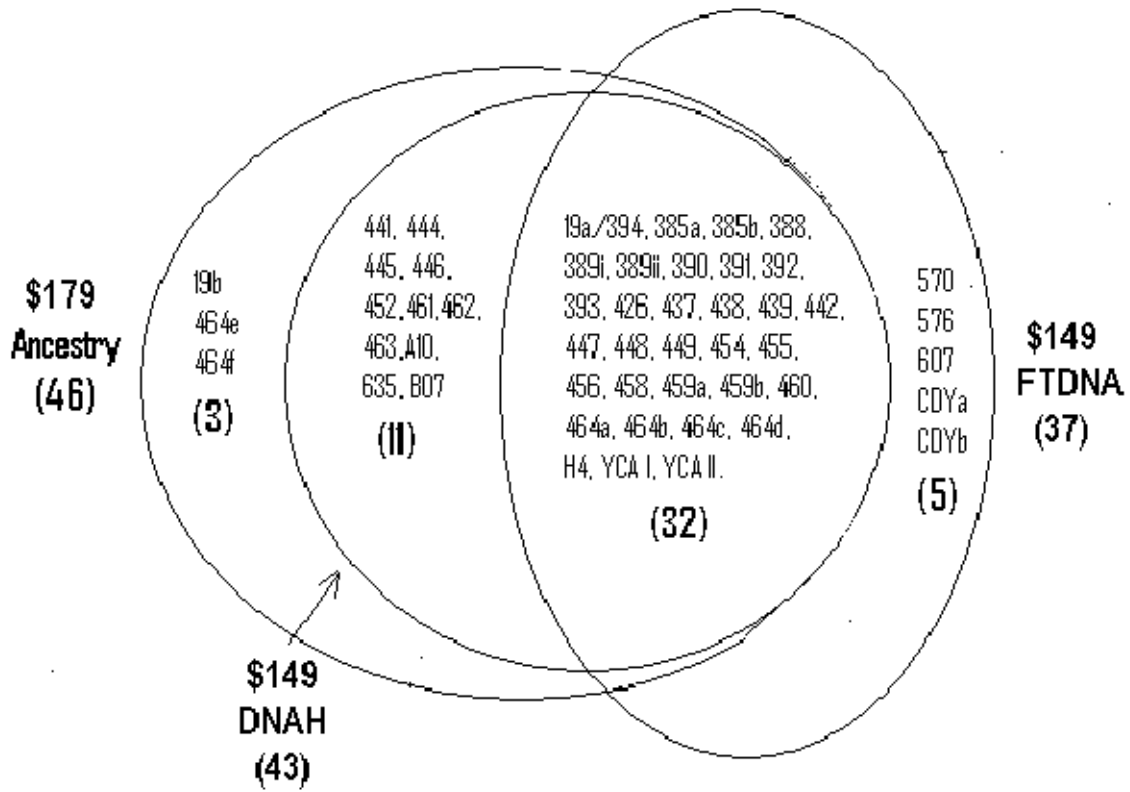
To qualify for the \$149 Advantage Program price, one must join a surname group when placing an order. To join the DNAH Merrill/Merrell surname group, contact Gary Merrill, ozobryum@comcast.net. For more information, go to the [DNAH home page](#) and then click on [Blog](#) in the left column.

3. Ancestry.com \$179 46-marker test

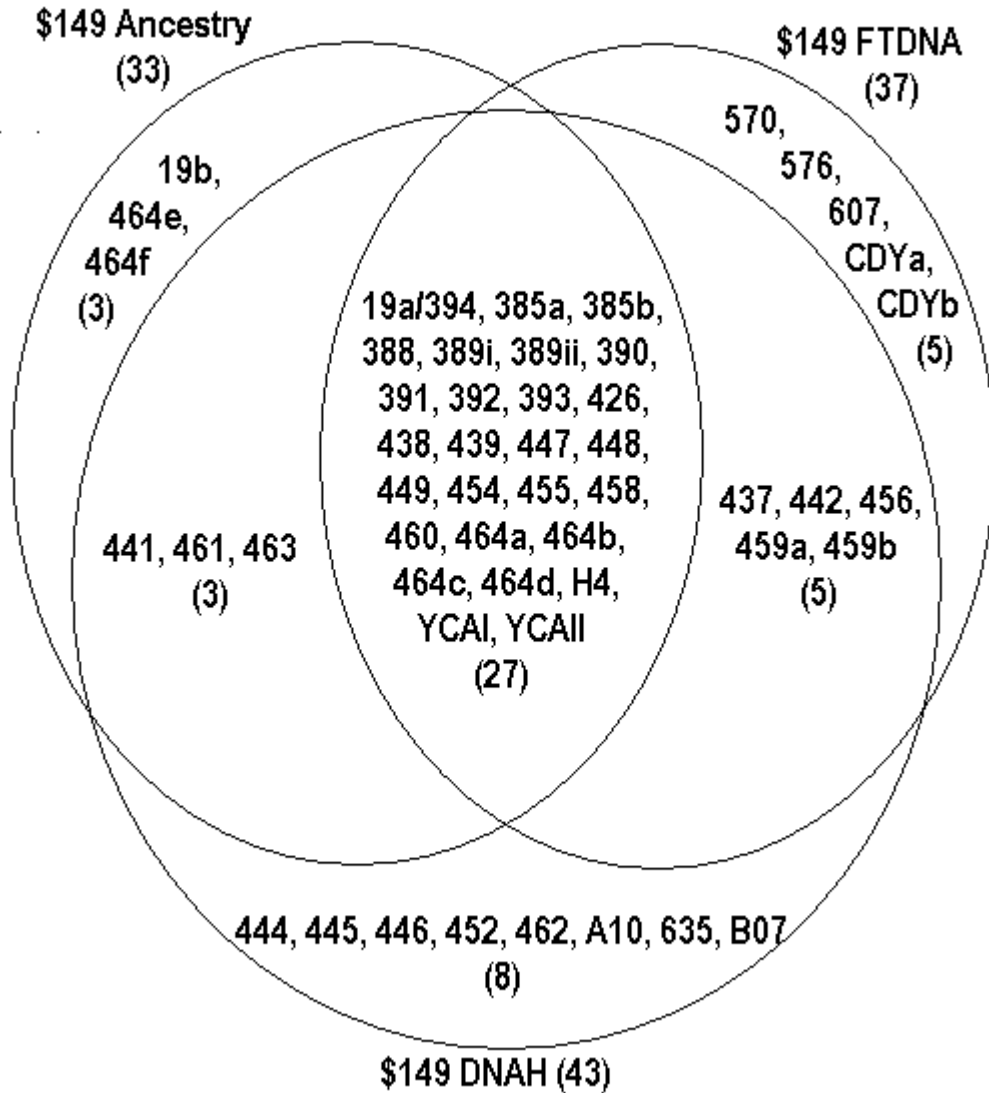
The three Ancestry markers 19b, 464e and 464f occur only rarely. For all practical purposes Ancestry (46 markers) and DNAH (43 markers) are equivalent.

4. [Ancestry.com](#) \$149 33-marker test

Comparison of \$179 Ancestry (46), \$149 FTDNA (37) and \$149 DNAH (43) tests



Comparison of \$149 Ancestry (33), \$149 FTDNA (37) and \$149 DNAH (43) tests



Back to [Y-Chromosome DNA Genealogy](#)

6/14/10 (Web Page, Filtered)

uses markers_measured_100501*.bmp (MS Paint) and .gif (MS Picture Mgr Export)

\\wd250gb\FrontPage Webs\Content\family2\merrill_dna\markers_measured_100501.htm, pdf

http://merrill.olm.net/family/merrill_dna/markers_measured_100501.htm

http://merrill.olm.net/family/merrill_dna/markers_measured_100501.pdf

